

LAMARI™ INGROUND 1 / 2 / 3 / 4 SC

Lamari Inground SC is a robust luminaire designed to be installed into the ground. A stainless steel installation sleeve provides rust protection as well as “armour” for the Lamari fixture itself. Overall, Lamari Inground SC comes with an IP67 protection factor, standard or Anti-skid glass, and as always, perfect colour mixing. With ±15° tilt adjustment, precision optics with wide range of beam angles and colour variants, in-ground version of the Lamari luminaire is great choice for an exterior applications such as flood lighting, wall grazing, wall washing and accent lighting.



KEY FEATURES

Application

Anti-skid glass option provides enhanced safety for pedestrian area applications, ensuring reliable footing even in wet or high-traffic environments. The fixture is designed for easy installation into both soft and hard ground, making it a versatile choice for various exterior surfaces.

Light Source

Full spectral LEDs selection with custom option on request. Long LED lifetime over 90,000 hrs. Manually adjustable tilt 0°–15° for fine adjustment of light beam.

Durability

Thanks to its tempered glass and high-pressure, extruded aluminum housing, Lamari Inground SC is IK06 and IP67 certified. For more extreme and marine applications, a harsh environment finish option is also available.

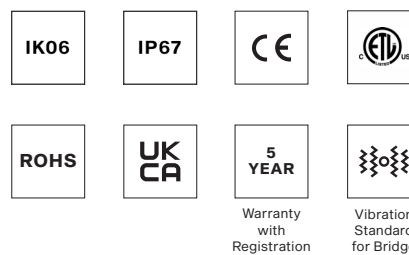
COLOURS



CONTROL & PROTOCOLS

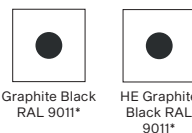


STANDARD & SPECIFICATION



FINISH OPTIONS

FIXTURE



SLEEVE & COVER PLATES



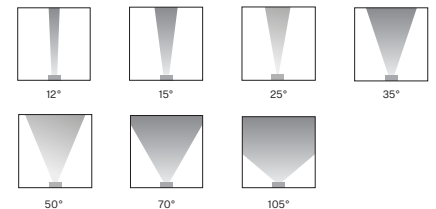
COLOUR TEMPERATURE

* UPON REQUEST

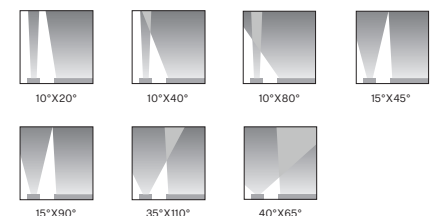


OPTIC OPTIONS

SYMMETRICAL



BI-SYMMETRICAL



SPECIFICATION

| | | | | | |
|-------------------------------|--|---|--|--|---|
| ELECTRICAL | Input Voltage | 120–277 V AC 50/60 Hz | | | |
| | Typical Power Consumption | Lamari Inground SC 1: 15 W | Lamari Inground SC 2: 25 W | | |
| | | Lamari Inground SC 3: 35 W | Lamari Inground SC 4: 45 W | | |
| OPTICAL | Light Source | Lamari Inground SC 1 / 2 / 3 / 4: 8 / 16 / 24 / 32 High Power Single Chip LEDs | | | |
| | Colour Variants | PW 3000 K TW 2200–3000 K Upon Request: PW 2200 K, 2700 K, 4000 K, 6500 K | | | |
| | Beam Angle | Without Linear Louver | Symmetrical: | 12° 15° 25° 35° 50° 70° 105° | |
| | | | Bi-symmetrical: | 10°x20° 10°x40° 10°x80° 15°x45° 15°x90° 35°x110° 40°x65° | |
| | | With Linear Louver | Symmetrical: | 12° 15° 25° | |
| | | | Bi-symmetrical: | 10°x20° 10°x40° 10°x80° 15°x45° 15°x90° 35°x110° 40°x65° | |
| | Anti-Skid Glass | Symmetrical: | 12° 15° 25° | | |
| | | Bi-symmetrical: | 10°x20° 10°x40° 10°x80° 15°x45° 15°x90° 35°x110° | | |
| | Lumen Output Delivered | Lamari Inground SC 1: 609 lm, (SC, TW @3000K) | | Lamari Inground SC 3: 1911 lm, (SC, TW @3000K) TBC | |
| | | Lamari Inground SC 2: 1274 lm, (SC, TW @3000K) TBC | | Lamari Inground SC 4: 2548 lm, (SC, TW @3000K) TBC | |
| Projected Lumen Maintenance | L90B10 >90.000 hrs, Ta = 25°C / 77°F | | | | |
| CONTROL | Interface Protocol | Via E-Box Remote range, Wireless DMX, NFC | | | |
| | Operating Modes | Pixel (per 4 LEDs/ 150mm) or Fixture mode | | | |
| | Setting / Addressing | Via Two Row LCD Display with Control Buttons on E-Box Remote or RDM communicator | | | |
| | Power Supply | Integrated | | | |
| | Connectivity | E-box Lite | Max. 32 pcs of Lamari Inground 1 / 2 / 3 / 4 | | |
| | | Width x Height x Length | Lamari Inground 1 / 2 / 3 / 4 | 149 x 194 x (425 / 725 / 1025 / 1335) mm | 5.9 x 7.6 x (16.7 / 28.5 / 40.4 / 52.6) in. |
| Weight (1 / 2 / 3 / 4) | 8.4 kg 2.0 lbs | x kg x lbs Lamari Inground 1 MC Fixture | x kg x lbs Install. Sleeve | | |
| | 15.0 kg 3.1 lbs | x kg x lbs Lamari Inground 1 MC Fixture | x kg x lbs Install. Sleeve | | |
| | 22.5 kg 4.9 lbs | x kg x lbs Lamari Inground 1 MC Fixture | x kg x lbs Install. Sleeve | | |
| | 30.0 kg 5.5 lbs | x kg x lbs Lamari Inground 1 MC Fixture | x kg x lbs Install. Sleeve | | |
| Housing | High Pressure Extruded Aluminium Body End Caps - Die-Cast Aluminium Tempered Glass | | | | |
| | Anti-Skid (Option) Stainless Steel Installation sleeve for pre-installation | | | | |
| PHYSICAL | Finish Options | Fixture | Graphite Black RAL 9011 Harsh Environment Graphite Black RAL9011 (Cost Option) | | |
| | | Sleeve & Cover Plates | Stainless Steel | | |
| Connections | Junction Box | | | | |
| Mounting Method | Inground Mount | | | | |
| Adjustability | Tilt 0°–15° | | | | |
| Protection Factor IK Rating | IP67 / Suitable For Wet Locations IK10 | | | | |
| Max. Static Load | Standard Tempered Glass: 45kN | | Anti-Skid Tempered Glass: 23kN | | |
| Cooling System | Convection | | | | |
| Operating Ambient Temperature | -20 °C / +40 °C (-4 °F / +104 °F) | | | | |
| Operating Temperature | +67 °C @ Ambient +40 °C (+153 °F @ Ambient +104 °F) | | | | |
| CERTIFICATION | Listings | ETL / cETL, CE, RoHS, UKCA | | | |
| | Anti-Skid Glass Certification | UNE ENV12633 (Class 3), DIN 51130 (R-12), DIN 51097 (Class B), ASTM C 1028-07 (DRY: ≥ 0,7, WET: ≥ 0,6), EN101:91 MOHS (4-Point scale) | | | |

Not Included Items

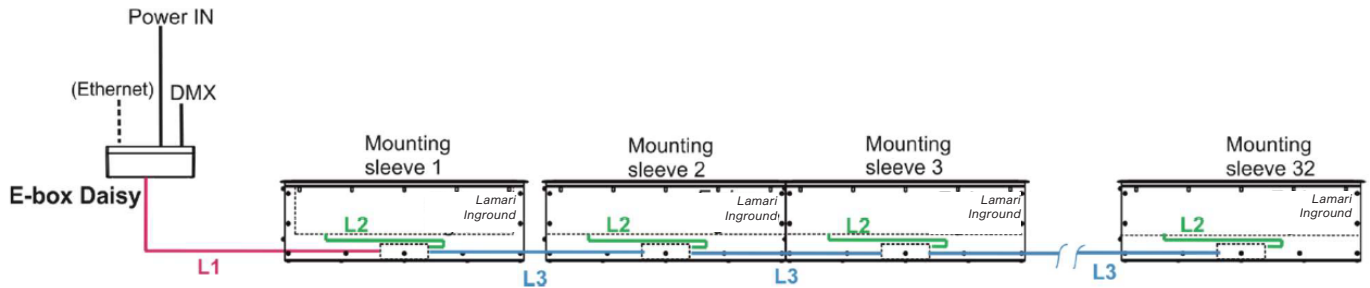
ACCESSORIES

| | |
|------------|--|
| Mounting | Lamari Inground Mounting Sleeve |
| | Lamari Inground Cover Plate Continuous (incl. 1x Cover Plate Middle) |
| | Lamari Inground Cover Plate End |
| | Lamari Inground Stand Alone Trim |
| Cables | Cable CE WCA Cable US WCA |
| Control | Junction Box for Inground |
| Insulation | Re-enterable Electrical Insulating Resin |

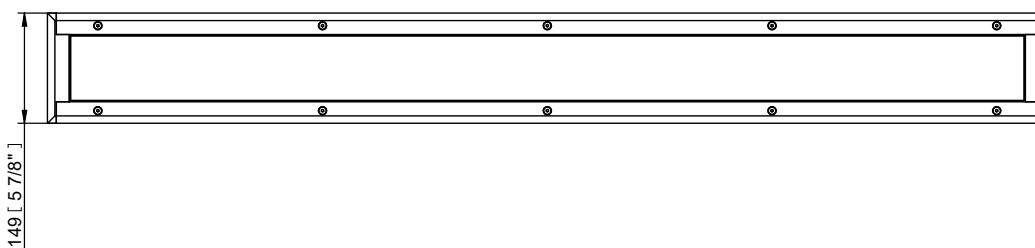
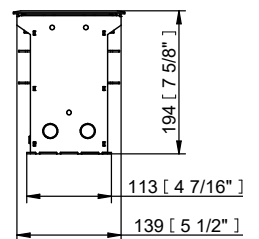
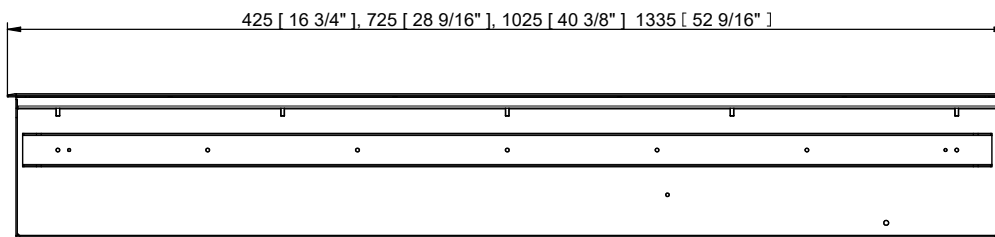
CONNECTIVITY

Please read the E-boxes user manuals for more information about their setting.

Important: the item "E-box mode" has to be set at "Pass Thr" (Personality - E-box mode - Pass Thr).

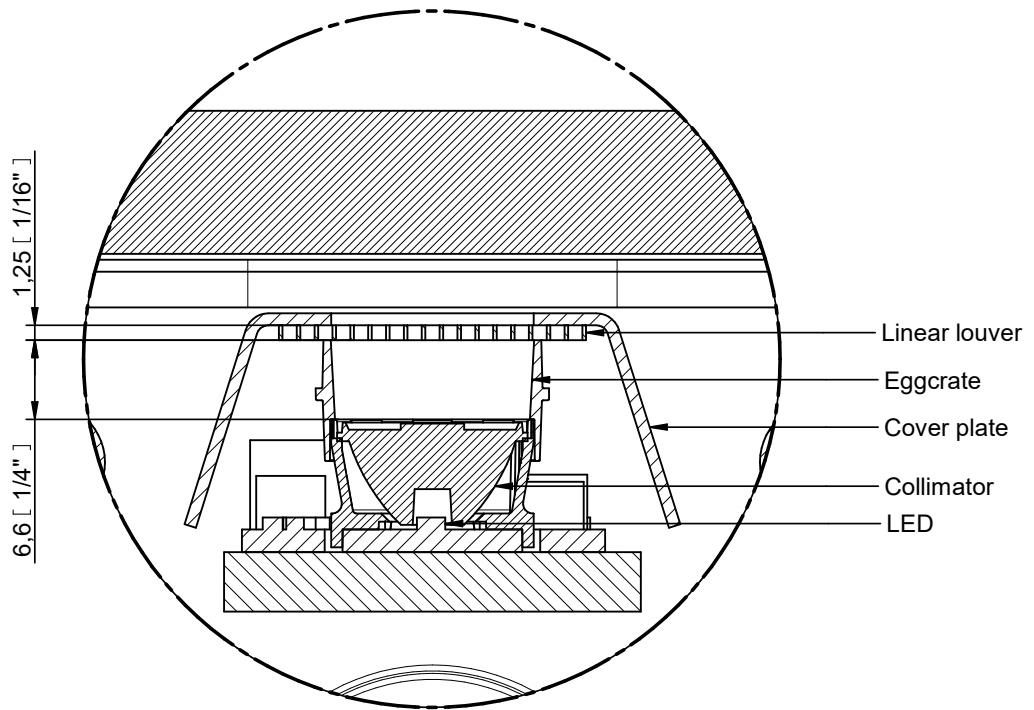


DIMENSIONS



LOW GLARE OPTICAL SYSTEM

DETAIL A



BI-SYMMETRICAL BEAM ANGLES

Bi-symmetrical: 10°x20° | 10°x40° | 10°x80° | 15°x45° | 15°x90° | 35°x110° | 40°x65°

