

LAMARI™ INGROUND 1 / 2 / 3 / 4 MC

For demanding architectural lighting projects, Lamari Inground offers a combination of precision, durability, and visual performance. A stainless-steel installation sleeve provides excellent rust protection and serves as durable armour for the fixture. The Lamari series offers exceptional colour mixing, particularly in the multichip version, ensuring vibrant and uniform illumination. Constructed from high-quality aluminium, the fixture delivers outstanding durability and features IK10 and IP67 ratings, guaranteeing resistance to mechanical impact, dust, and harsh weather conditions. With a wide selection of beam angles, users can achieve precise lighting control to meet specific project requirements. Available in four length options, this fixture is a reliable and versatile choice for a wide range of exterior lighting applications.



KEY FEATURES

Application

Anti-skid glass option provides enhanced safety for pedestrian area applications, ensuring reliable footing even in wet or high-traffic environments. The fixture is designed for easy installation into both soft and hard ground, making it a versatile choice for various exterior surfaces.

Light Source

Full spectral LEDs selection with custom option on request. Long LED lifetime over 90,000 hrs. Manually adjustable tilt 0°–15° for fine adjustment of light beam.

Durability

High durability with IP67 ingress protection, IK10 impact resistance, and walkover housing for the highest durability requirements.

COLOURS



RGBW



RGBA

CONTROL & PROTOCOLS



OPTIONAL



OPTIONAL

STANDARD & SPECIFICATION



IK10



IP67



CE



ETL



ROHS



UK CA



5 YEAR

Warranty with Registration



Vibration Standard for Bridge

FINISH OPTIONS

FIXTURE



Graphite Black RAL 9011*



HE Graphite Black RAL 9011*

SLEEVE & COVER PLATES



Stainless Steel

* CLOSEST RAL TONE
* HE = HARSH ENVIRONMENT

OPTIC OPTIONS

SYMMETRICAL (CLEAR GLASS)



15°



25°



35°



50°



65°



100°

BI-SYMMETRICAL (CLEAR GLASS)



15°x40°



15°x70°



20°x45°



20°x80°



35°x110°



40°x65°

SPECIFICATION

ELECTRICAL	Input Voltage	120–277 V AC 50/60 Hz			
	Typical Power Consumption	Lamari Inground MC 1: 15 W TBC	Lamari Inground MC 2: 25 W TBC		
Lamari Inground MC 3: 35 W TBC		Lamari Inground MC 4: 45 W TBC			
OPTICAL	Light Source	Lamari Inground MC 1 / 2 / 3 / 4: 12 / 24 / 36 / 48 Mid Power Multi Chip LEDs			
	Colour Variants	RGBW (W - 6.500 K) RGBA			
	Beam Angle	Without Linear Louver	Symmetrical:	15° 25° 35° 50° 65° 100°	
			Bi-symmetrical:	15°x40° 15°x70° 20°x45° 20°x80° 35°x110° 40°x65°	
		With Linear Louver	Symmetrical:	15° 25°	
			Bi-symmetrical:	15°x40° 15°x70° 20°x45° 20°x80° 35°x110°	
	Anti-Skid Glass	Symmetrical:	15° 25°		
		Bi-symmetrical:	15°x40° 15°x70° 20°x45° 20°x80° 35°x110°		
	Lumen Output Delivered	Lamari Inground MC 1: 509 lm, (MC, RGBA @3000K) TBC	Lamari Inground MC 3: 1527 lm, (MC, RGBA @3000K) TBC		
		Lamari Inground MC 2: 1018 lm, (MC, RGBA @3000K) TBC	Lamari Inground MC 4: 2036 lm, (MC, RGBA @3000K) TBC		
Projected Lumen Maintenance	L90B10 >90.000 hrs, Ta = 25°C / 77°F				
CONTROL	Interface Protocol	Via E-Box Remote range, Wireless DMX, NFC			
	E-Box Control Protocols	USITT DMX512, RDM, ArtNet, MA Net, MA Net2, sACN, Kling-Net			
	Wireless DMX (Option)	Lumen Radio CRMX Technology			
	Setting / Addressing	Via Two Row LCD Display with Control Buttons or RDM communicator			
	Power Supply	Integrated			
	Connectivity	E-box Lite	Max. 32 pcs of Lamari Inground 1 / 2 / 3 / 4		
	Width x Height x Length	Lamari Inground 1 / 2 / 3 / 4	149 x 194 x (425 / 725 / 1025 / 1335) mm	5.9 x 7.6 x (16.7 / 28.5 / 40.4 / 52.6) in.	
Weight TBC	8.4 kg 2.0 lbs	x kg x lbs	Lamari Inground 1 MC Fixture	x kg x lbs Install. Sleeve	
	15.0 kg 3.1 lbs	x kg x lbs	Lamari Inground 1 MC Fixture	x kg x lbs Install. Sleeve	
	22.5 kg 4.9 lbs	x kg x lbs	Lamari Inground 1 MC Fixture	x kg x lbs Install. Sleeve	
	30.0 kg 5.5 lbs	x kg x lbs	Lamari Inground 1 MC Fixture	x kg x lbs Install. Sleeve	
PHYSICAL	Housing	High Pressure Extruded Aluminium Body End Caps - Die-Cast Aluminium Tempered Glass Anti-Skid (Option) Stainless Steel Instalation Sleeve for Pre-Installation			
	Finish Options	Fixture	Graphite Black RAL 9011 Harsh Environment Graphite Black RAL 9011 (Cost Option)		
		Sleeve & Cover plates	Stainless Steel		
	Connections	Junction Box			
	Mounting Method	Inground Mount			
	Adjustability	Tilt 0°–15°			
	Protection Factor IK Rating	IP67 / Suitable For Wet Locations IK10			
	Max. Static Load	Standard Tempered Glass: 45kN		Anti-Skid Tempered Glass: 23kN	
	Cooling System	Convection			
	Operating Ambient Temperature	-20°C / +40°C (-4°F / +104°F)			
Operating Temperature	+67°C @ Ambient +40°C (+153°F @ Ambient +104°F)				
CERTIFICATION	Listings	ETL / cETL, CE, RoHS, UKCA			
	Anti-Skid Glass Certification	UNE ENV12633 (Class 3), DIN 51130 (R-12), DIN 51097 (Class B), ASTM C 1028-07 (DRY: ≥ 0,7, WET: ≥ 0,6), EN101:91 MOHS (4-Point scale)			

Not Included Items

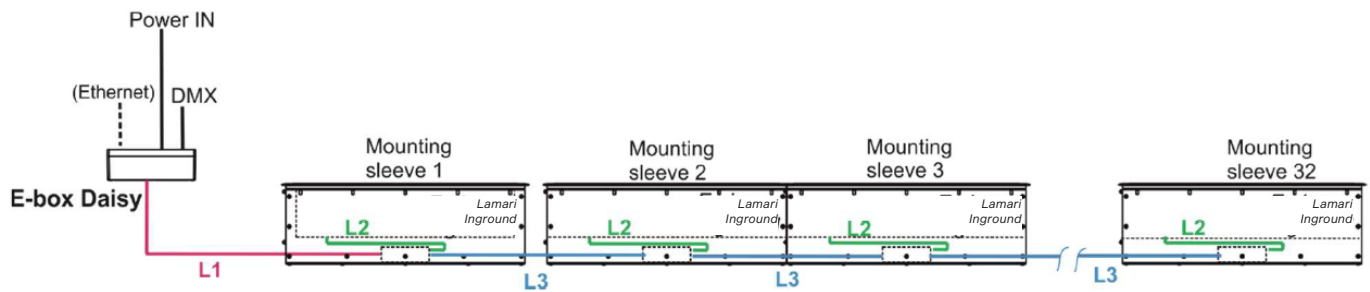
ACCESSORIES

Mounting	Lamari Inground Mounting Sleeve
	Lamari Inground Cover Plate Continuous (incl. 1x Cover Plate Middle)
	Lamari Inground Cover Plate End
	Lamari Inground Stand Alone Trim
Cables	Cable CE WCA Cable US WCA
Control	Junction Box for Inground
Insulation	Re-enterable Electrical Insulating Resin

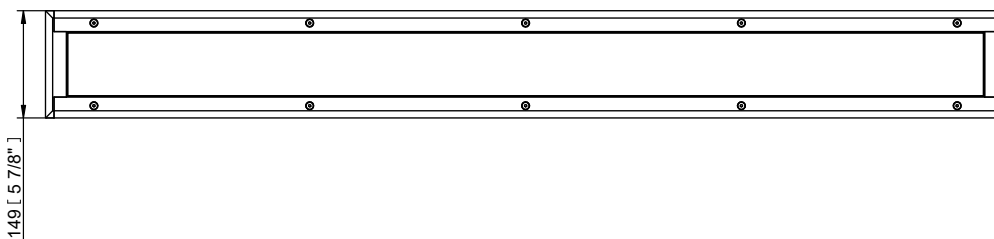
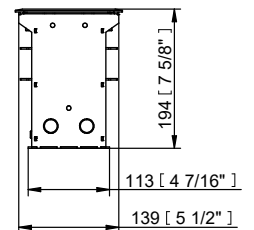
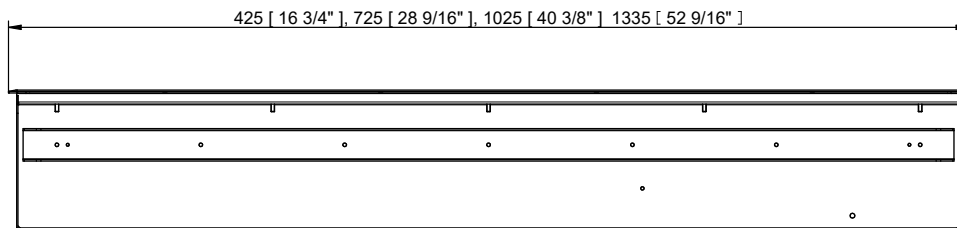
CONNECTIVITY

Please read the E-boxes user manuals for more information about their setting.

Important: the item "E-box mode" has to be set at "Pass Thr" (Personality - E-box mode - Pass Thr).

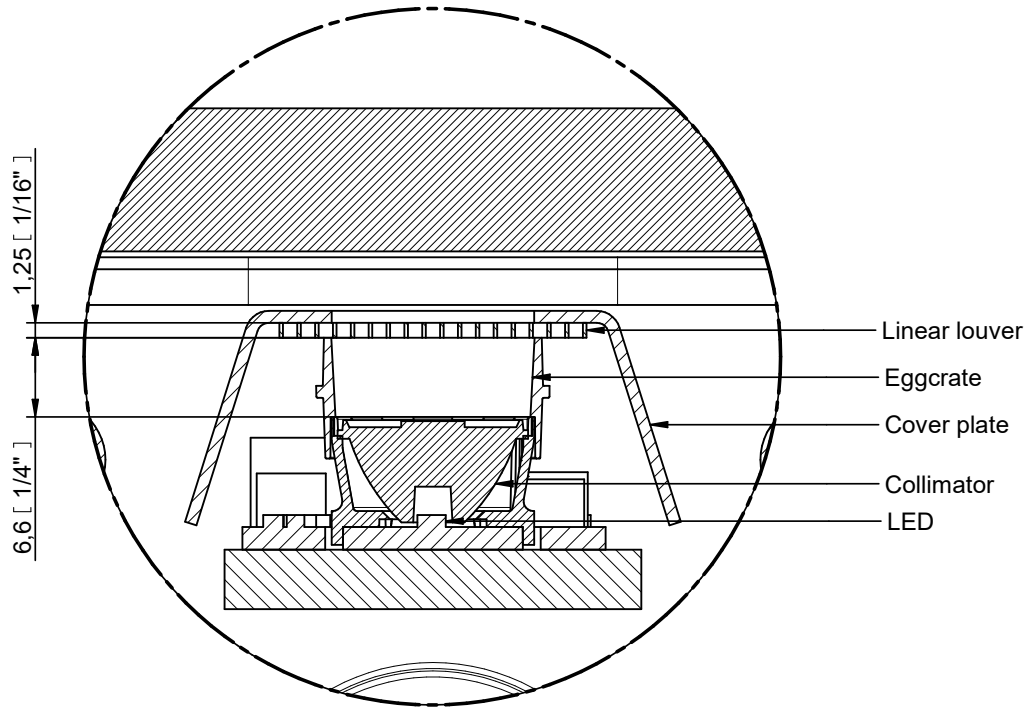


DIMENSIONS



LOW GLARE OPTICAL SYSTEM

DETAIL A



BI-SYMMETRICAL BEAM ANGLES

Bi-symmetrical: 15°x40°, 15°x70°, 20°x45°, 20°x80°, 35°x110°, 40°x65°

