

LYRAE™ M MC

Difficult inground installations are made easier with the Lyrae M MC. High light output comes from powerful LEDs and it can be used with a variety of optics, from narrow to wide, in addition to a bi-symmetrical option. The light source can be remotely tilted 25° from the horizontal position, always ensuring accurate illumination of the selected surface. Additionally, Lyrae M MC can be equipped with anti-skid glass featuring the highest standards of certification for anti-slip usage having no impact on the fixture's outstanding colour mixing.



KEY FEATURES

Lumen output & Light source

Luminaire with high-power LEDs provides outstanding output. Multiple LED colour variants. No light spills. Perfectly homogenised light output with high efficacy.

Design & Durability

Compact, durable and stylish housing made of high-pressure die cast aluminium. IP68 and IK10 certification; suitable for marine and traffic applications. Supported with a 5 year warranty.

Flexibility

Exceptional inground LED luminaire with a multiple light output variants and beam angles.

COLOURS



RGBW



RGBA

CONTROL & PROTOCOLS



OPTIONAL



OPTIONAL



OPTIONAL

STANDARD & SPECIFICATION



IP68



IK10



CE



ETL



ROHS



UK CA



5 YEAR

Warranty with Registration



VIBRATION STANDARD FOR BRIDGE

Vibration Standard for Bridge

TRIM FINISH OPTIONS



Stainless Steel

OPTIC OPTIONS

SYMMETRICAL



12°



15°



25°



30°



45°



65°

BI-SYMMETRICAL



10°x30°



10°x60°



15°x45°



30°x60°



30°x10°



60°x10°



45°x15°



60°x30°

TRIM OPTIONS



Flush trim Round



Bevel edge trim Round



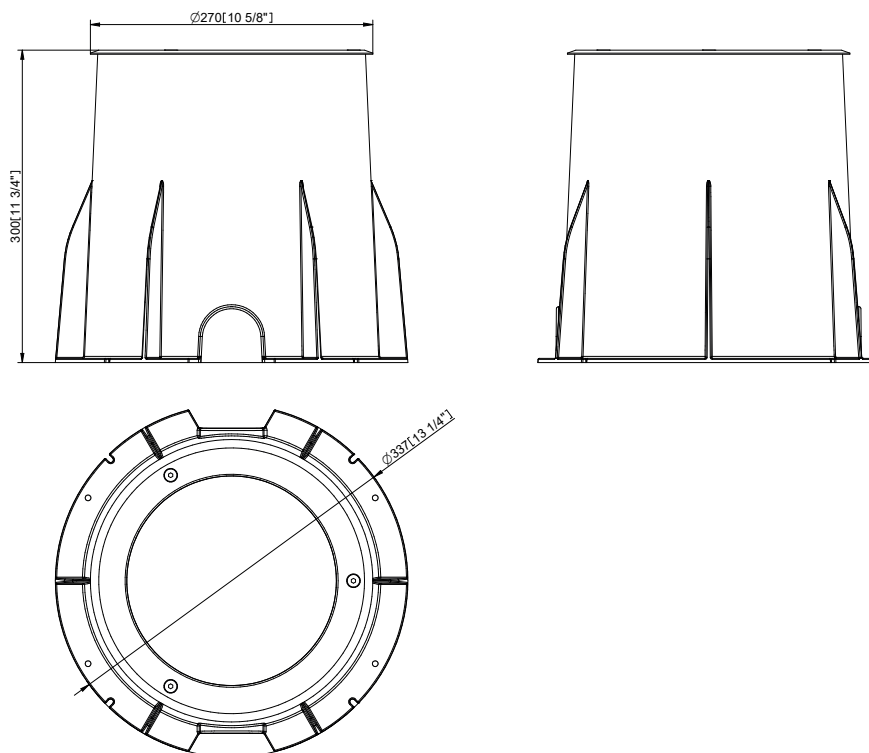
Bevel edge trim Square

SPECIFICATION

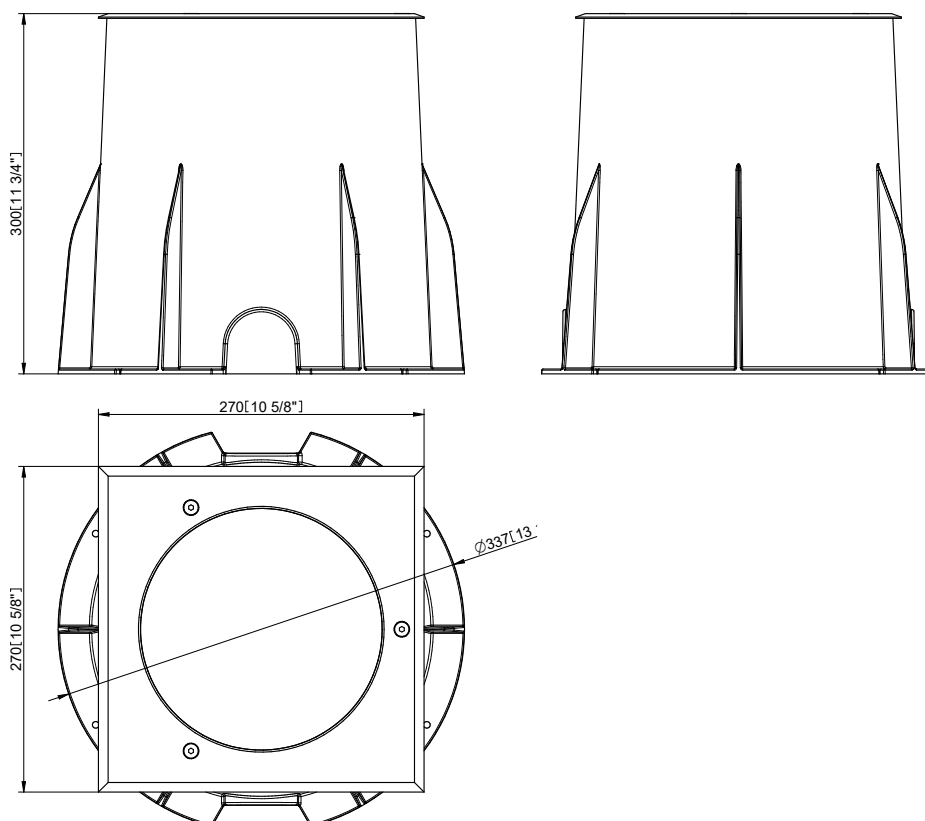
ELECTRICAL	Input Voltage	120 - 277 V AC 50/60 Hz	
	Typical Power Consumption	60 W +/-10 %	
OPTICAL	Light Source	High Power Multi Chip LEDs	
	Colour Variants	RGBW (W - 6500 K) RGBA	
	Beam Angle	Clear Glass	Symmetrical: 12° 15° 25° 30° 45° 65° Bi-symmetrical: 10°x30° 30°x10° 10°x60° 60°x10° 15°x45° 45°x15° 30°x60° 60°x30°
		Anti-Skid Glass	Symmetrical: 18° 22° 35° 50° (preliminary) Bi-symmetrical: 20° x 35° 35° x 20° 20° x 65° 65° x 20° 20° x 50° 20° x 50° 35° x 65° 65° x 35° (preliminary)
	Lumen Output Delivered	1548 lm (@12° RGBW, @ 6500 K)	
	Projected Lumen Maintenance	L90B10 >90.000 hrs, Ta = 25°C / 77°F	
CONTROL	Interface Protocol	DMX/RDM DTP DALI 2	
	Operating Modes	DMX, Stand-alone	
	Settings / Addressing	RDM	
	Power Supply	Integrated	
PHYSICAL	Flange Diameter x Diameter x Height	Bevel Egde Trim: ø 270 x ø 337 x 300 mm (ø 10.7 x ø 13.3 x 11.8 in.)	
	Weight	6.75 kg 14.9 lbs	
	Housing	High Pressure Die-Cast Aluminium Body Stainless Flange Tempered Glass (Clear or Anti-Skid)	
	Trim Options	Bevel Edge Trim Flush Trim	
	Trim Finish Options	Stainless steel	
	Trim Shape	Round Square	
	Cables / Connections	Integrated Junction Box	
	Mounting Method	External Mounting Sleeve	
	Adjustability	Motorised Tilt 0°- 25° (One Direction Tilt) - Setting-up via NFC (password protected), or DMX	
	Protection Factor	IP68 / Suitable For Wet Locations	
	IK Rating	IK10	
	Static Load Resistance	35 kN (TBC)	
	Cooling System	Convection	
	Operating Ambient Temperature	-20 °C / +40 °C (-4 °F / +104 °F)	
CERTIFICATION	Listings	ETL / cETL, CE, RoHS, UKCA	
ACCESSORIES	Not Included Items		
		Lyrae M Mounting Sleeve	
		Junction Box (CE or US)	
		Trim for Lyrae M (Stainless Steel, Round, Bevel Edge)	
		Trim for Lyrae M (Stainless Steel, Round, Flush)	
		Trim for Lyrae M (Stainless Steel, Square, Bevel Edge)	
		Re-enterable Electrical Insulating Resin	
DEMO SET	Lyrae M Demo Set	Includes: Lyrae fixture, Mounting Sleeve, Trim, Set of Optical Foils (Not suitable for permanent instalations. IP2X.)	

DIMENSIONS

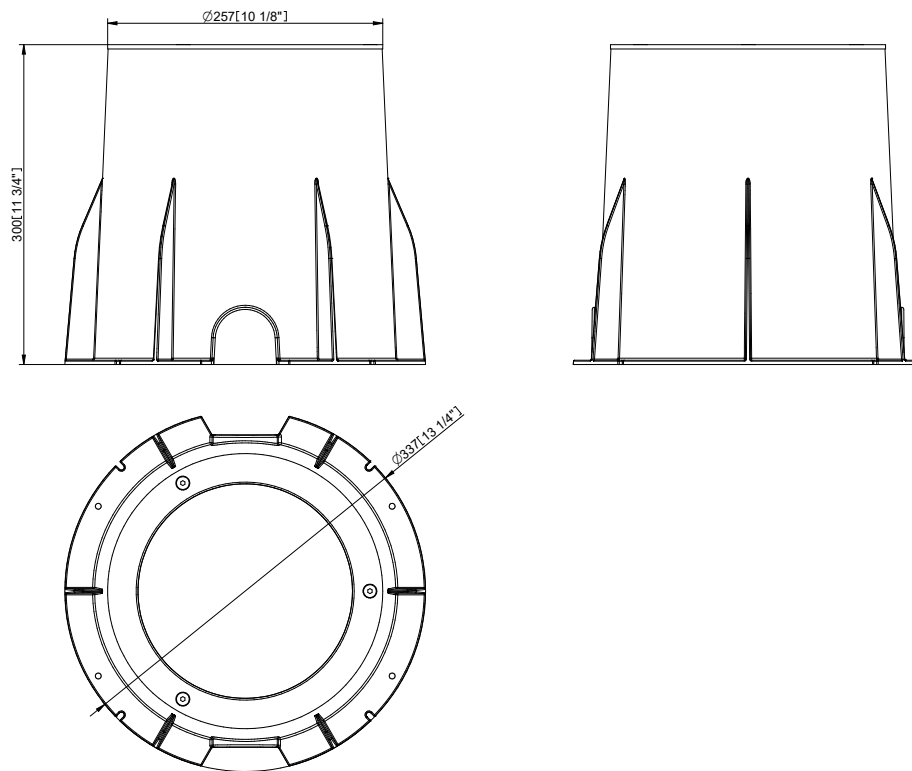
with Round beveled Trim



with Square beveled Trim



with Round Flush Trim



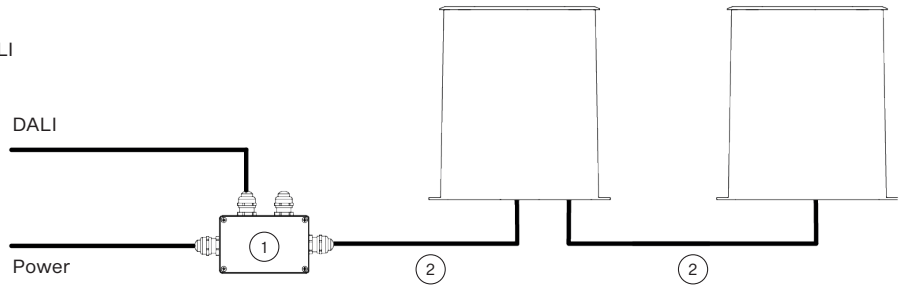
CONTROL AND CONNECTION OPTIONS - CE

DALI

Example of ordering code: Lyrae M MC RGBCW 12° DALI

- 1) Junction Box
- 2) Hybrid Cable (1305 3693)
or
Scope of Others

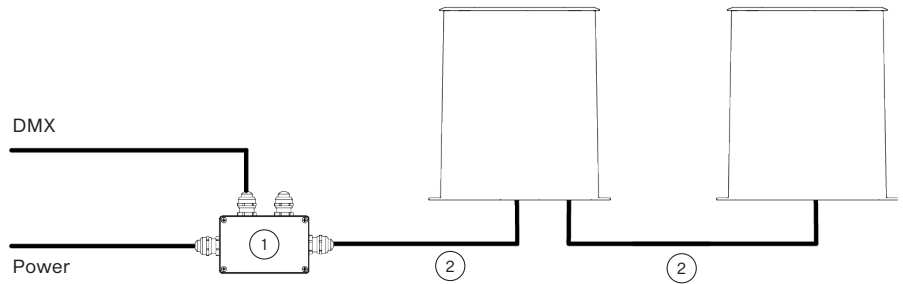
NOTE: All Anolis cables must be in placed in protective conduit – not suitable for direct burial.



DMX

- 1) Junction Box
- 2) Cable (1305 1508)

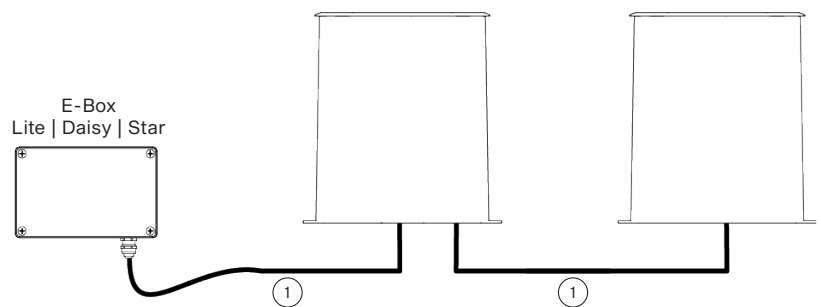
Note: All Anolis cables must be in placed in protective conduit – not suitable for direct burial.



DMX or ETHERNET via E-BOX

- 1) Cable CE WCA (1305 3138)

Note: All Anolis cables must be in placed in protective conduit – not suitable for direct burial.



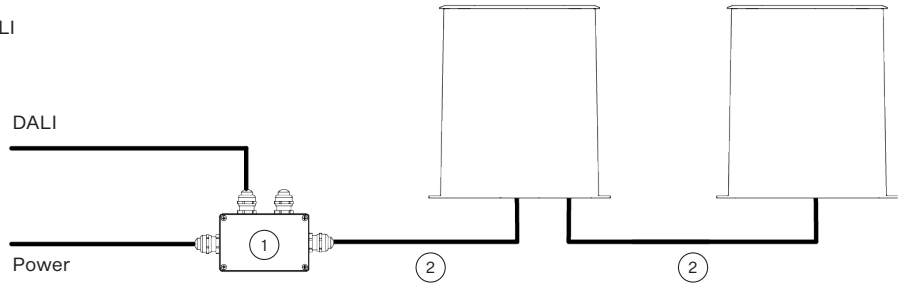
CONTROL AND CONNECTION OPTIONS - US

DALI

Example of ordering code: Lyrae M MC RGBCW 12° DALI

- 1) Junction Box
- 2) SJTW 5x 14AWG (13053336), black or Scope of Others

NOTE: All Anolis cables must be in placed in protective conduit – not suitable for direct burial.



DMX or ETHERNET via E-BOX

- 1) Cable US WCA (1305 3139)

Note: All Anolis cables must be in placed in protective conduit – not suitable for direct burial.

