

PROMOTION™

Take your bar, club and retail promotions to the next level with the futuristic ROBE ProMotion moving head effects and video projector. Compact, stylish yet fast moving, this projector produces 1000 ANSI Lumens of creative output with its longlasting LED source. With RGB and CMY colour mixing capability; digital gobos and graphic effects images and videos; dynamic range of in-built effects, the only limit is your creativity. The ability to upload custom artwork, photographs and videos is enhanced by the live streaming input facility from external high definition multimedia interfaces. With keystone, iris and motorised focus, you have total control of your visual creations. Supplied with two sets of base covers, the first set is suitable for stage applications, while the second set hides control display and cables at the back of the base making it ideal for the retail and installation market. ProMotion can be optionally equipped with an ADM Automatic Distance Meter, to keep the projection absolutely sharp and focused automatically without any user alteration.



KEY FEATURES

Light source

High power RGB LED engine
Full HD resolution

Light output

Comparable with 5000 ANSI lumen lamp projectors

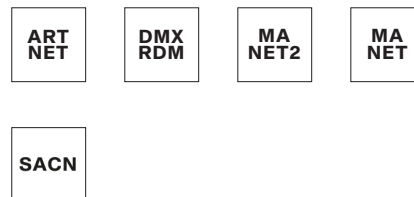
Zoom range

17° (throw ratio 3.5)
26° (throw ratio 2.3 wide lens option)

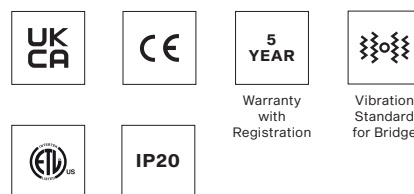
Effects

Digital gobo wheel
Effect wheel
Videos
In-air effects
Live input

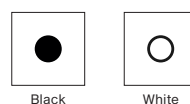
CONTROL & PROTOCOLS



STANDARD & SPECIFICATION

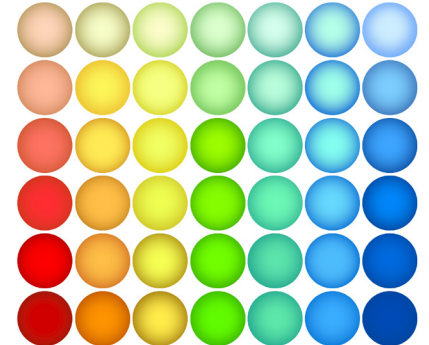


FINISH OPTIONS



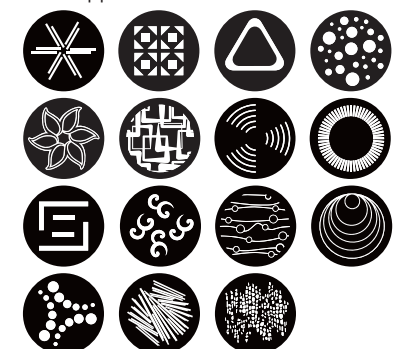
OPTIC OPTIONS

LED colours RGB LED source is able to produce 16.7 million colours.



OPTIC OPTIONS

Digital Gobo Wheel Standard digital gobo wheel contains 100 images, 100 videos and 50 black and white gobos, while the user's digital gobo wheel is supplied with just examples of images and videos of various different applications.



OPTIC OPTIONS

Colour Modifying

Colour modification has never been easier. By applying colour filters, colour keying or masking effects one can achieve quick and powerful colour transmissions.



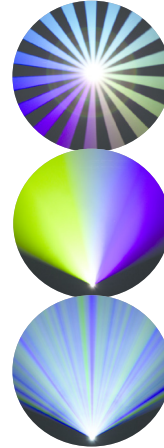
Gobo Transition

Simple to use reprogrammed automatic gobo transition can easily be selected. Automatic transition feature can be combined with gobo auto playback for super quick setup.



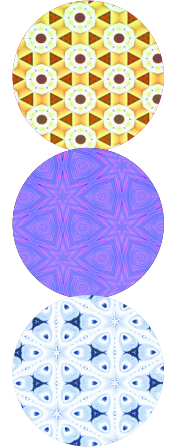
Mid-Air Effects

The ProMotion™ internal effect engine can generate spectacular mid-air animations with colourful laser like beams.



Kaleidoscopic Effects

The Kaleidoscopic effects allow the user to generate many new and appealing graphical effects from the current content.



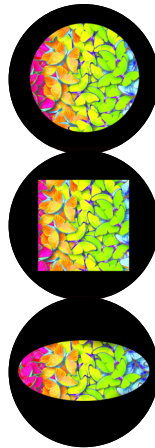
Picture & Movie

The ProMotion™ micro-media server supports MPEG4 and H264 video formats as well as JPEG image files (max. 1920 x 1080 pixel). Includes factory media content and custom artwork. Still photographs and video can also be simply uploaded for projection.



Digi Iris

Digi Iris is a flexible masking tool that changes the shape of the image or video. Various shapes are available as well as hard/soft edge iris types.



Grey Box Correction

This effect allows you to trim digital black edges when using a gobo projection or other non-fullscreen content.



Keystoning

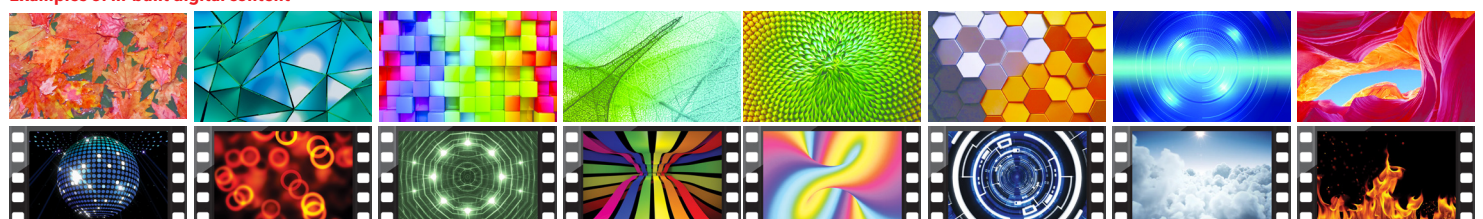
ProMotion™ provides a full set of keystone parameters. Picture distortion can be corrected in X and Y directions. Special Auto Keystoning feature can correct the image during pan and tilt movement.



Remote Content Management

Remote Content Management allows custom media content to be easily managed in large number of ProMotion™ devices simultaneously, and remotely, without the need for anyone to be present. This is an ideal solution for retail applications where content can be regularly updated in a chain of stores, shopping centers, car showrooms, bowling centers, sports facilities, restaurants, bars and clubs. The Management system works from any desktop or mobile platform simply by using a web browser, either via wired Ethernet network or by utilizing wireless Access Point, built directly into ProMotion™. RCM provides facilities for uploading, viewing and removal of content media files. Automatic synchronization of content ensures content consistency across the fleet of devices, and has been designed to allow for the addition of further devices to the installation, without the need to perform any further content management.

Examples of in-built digital content



PROMOTION SPECIFICATION

SOURCE	Light Source Type	RGB LED device	
	Lifetime	20.000 hours	Eco mode: extended life time of LED source
PROJECTOR SPECIFICATIONS	Light Output	1000 ANSI lumens (Comparable with 5000 ANSI lumen lamp projectors)	
	Aspect Ratio	16:09	
	Resolution	1920 x 1080	
	Beam Angle	17°	
	Throw Ratio	3.5	
	Contrast Ratio	500:1	
	Display Colours	16.7 million colours	
	Optional Wide Lens	26°	
	Throw Ratio Wide Lens	2.3	
	MAIN FEATURES		Colour Mixing mode RGB/CMY
White Light		Variable CCT 3.200K - 9.500K	
Colour effect wheel with wide range of in-built effects		Colour transitions and cross-fades, multiple colour images, rainbow effects	
Digital gobo wheel 1		With standard gobos, images and videos	
Digital gobo wheel 2		With user's gobos, images and videos	
		Gobo rotation and indexing	
		Video on/off and speed control	
		Live input via external High Definition Multimedia Interface	
Effect wheel with wide range of graphic effects		Kaleidoscopic effect, fish eye, iris, zoom, swirl effect, pixelation effect, cross-stitching, posterization, and more...	
		Effect speed control	
Keystoning		Horizontal / Vertical	
ADM™ Automatic distance meter		Upon Request	
		Grey box correction	
		Motorized focus	
		Pre-programmed random strobe & pulse effects	
Dimmer	0-100%		
CONTROL & PROGRAMMING	Setting & Addressing	Robe Graphic Touch Screen (50x40mm / 1.97" x 1.57")	
	Protocol	USITT DMX-512, RDM, ArtNet, MA Net, MA Net2, sACN	
		REAP™ - Robe Ethernet Access Portal	
	Wireless CRMX™ technology from Lumen Radio	Upon Request	
	DMX Protocol Modes	1	
	Control channels	25	
	RTC (Real-time clock)	Built-in device to keep track of actual time in order to start and stop playback at given time	
		Stand-alone operation	
CONTENT MANAGEMENT		Upload and projection of custom artwork, still photographs and videos from USB memory stick	
		Remote content management	
	Internal Storage	High speed internal memory for user content – 32 GB	
	NAS client	Automatic content synchronization tool	
	Live video stream	From remote source	

PROMOTION SPECIFICATION

MOVEMENT	Pan movement	540°
	Tilt movement	250°
	Movement control	Standard and Speed
		Controllable speed of Pan/Tilt movement
		Automatic Pan/Tilt position correction
HARDWARE		Raspberry Pi, Model 3, 1GB
OPERATING SYSTEM		Linux OS
THERMAL SPECIFICATION	Max. ambient temperature	40°C (104°F)
	Max. surface temperature	60°C (140°F)
	Max. operating temperature	0°C (32°F)
ELETRICAL SPECIFICATION & CONNECTIONS	Power supply	Electronic auto-ranging
	Input voltage range	100-240 V, 50/60 Hz
	Power consumption	140 W
	Power connector in/out	Neutrik powerCON TRUE1 in/out
	DMX & RDM data in/out	Locking 5-pin XLR
	Ethernet port in/out	RJ45
		2x USB 2.0 connector (series A)
		External video input 1x High Definition Multimedia Interface
		Embedded Ethernet switch 10/100 Mbps: 1 x in / 1 x out
CERTIFICATION	Listings	ETL/cETL, CE, UKCA
PHYSICAL	Width x Height x Depth (Height - Head in vertical position)	328 x 508 x 364 mm / 12.91 x 20 x 14.3 in. (base with installation covers) 328 x 508 x 283 mm / 12.91 x 20 x 11.14 in. (base with stage covers)
	Weight	12kg / 26.46lbs
RIGGING	Mounting points	1 pair of 1/4-turn locks
		1x Omega adaptor with 1/4-turn quick locks
		Universal operating position
		Safety cable attachment point
INCLUDED ITEMS		User Manual
		Omega Adaptor CL-regular
		Power cord including powerCON TRUE1 In connector
OPTIONAL ACCESSORIES		Doughty Trigger Clamp: 17030386
		CRMX Wireless Receiver: 13030894
		Safety wire 35 kg: 99011963
		Wide angle lens: 26° 10980547
		Installation base covers black: 10980616
		Ceiling mounting kit black: 10980551
		Daisy Chain powerCON TRUE1 In/Out, EU, 2m, Indoor: 13052439
		Daisy Chain powerCON TRUE1 In/Out, US, 2m, Indoor: 13052440
		Daisy Chain powerCON TRUE1 In/Out, EU, 5m, Indoor: 13052444
		ADM™ Automatic distance meter: 10980549
		Single Top Loader Case: 10120265
	Quad Top Loader Case: 10120266	
	Foam Shell: 20020378	

DIMENSIONS

