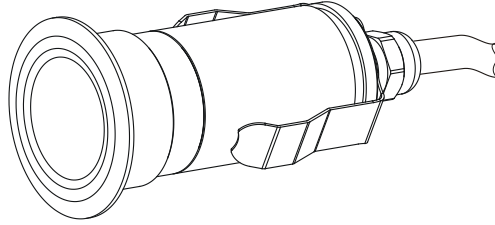


User instructions

ArcSource 1 Asymmetric

The ArcSource 1 Asymmetric generates colored light by means of high power LED. The product was designed for exterior use and it is ideal for locations where signaling, directional or effect lighting is required.



Attention:

Consider the respective national norms during the installation!

Do not install the unit near naked flames

Avoid using the unit in locations subject to possible impacts

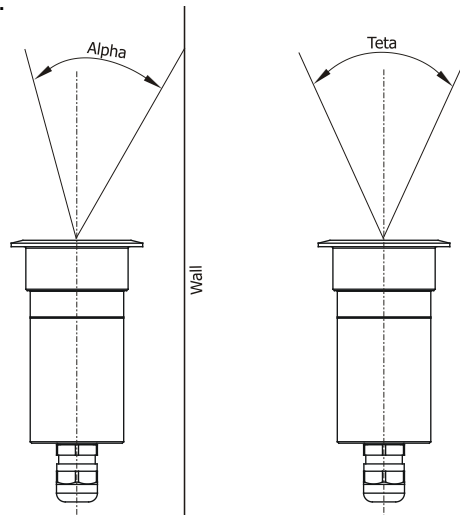
Do not attempt to dismantle or modify the unit

The unit is suitable for underwater installation up to depth of 5 m

Technical specifications:

Input voltage:	9-35V DC or 6-24V AC
Maximum power consumption:	1.6 Watts
Built-in ArcSource 1 driver:	Operates on variable AC or DC input, keeps constant current to the LED
Anolis suitable power source:	ArcPower 12 (switched at 12V or 24V)
Operating ambient temp. range:	-20°C/+40°C
Cooling system:	conduct. cooling system
LED device:	ProLight Opto Proeon
Typical lumen maintenance:	70% @ 50,000 hours
LED life expectancy:	more than 100,000 hours
Glass cover:	6 mm flat clear tempered glass
Total beam divergence (narrow beam):	Alpha=9°, Teta=8°
Total beam divergence (medium beam):	Alpha=13°, Teta=14.5°
Colour variants:	cool white (6500 K), warm white (3300K), red, green, blue, amber
Construction:	Stainless steel top flange Brass housing
Ingress Protection:	IP 68
Wiring:	Ölflex Robust 210 cable ,2x0.5mm ² , 1m long
Mounting depth:	90 mm (plus cca 20 mm for bend of cable)

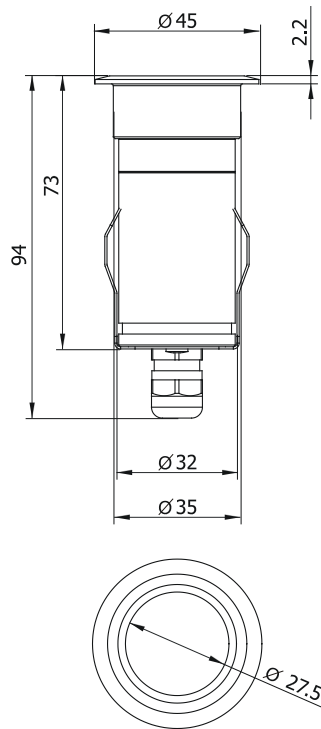
Typical total beam divergence:



Installation:

The ArcSource 1 can be arranged in any position orientation. Spring clips enable to hold the light in prepared positions in concrete, paving or walls. Connect to the end of the ArcSource's cable to the suitable AC (DC) power supply, e.g. ArcPower 12.

Dimensions(mm):



Weight:

300 g

Dip switch settings of the ArcPower 12:

