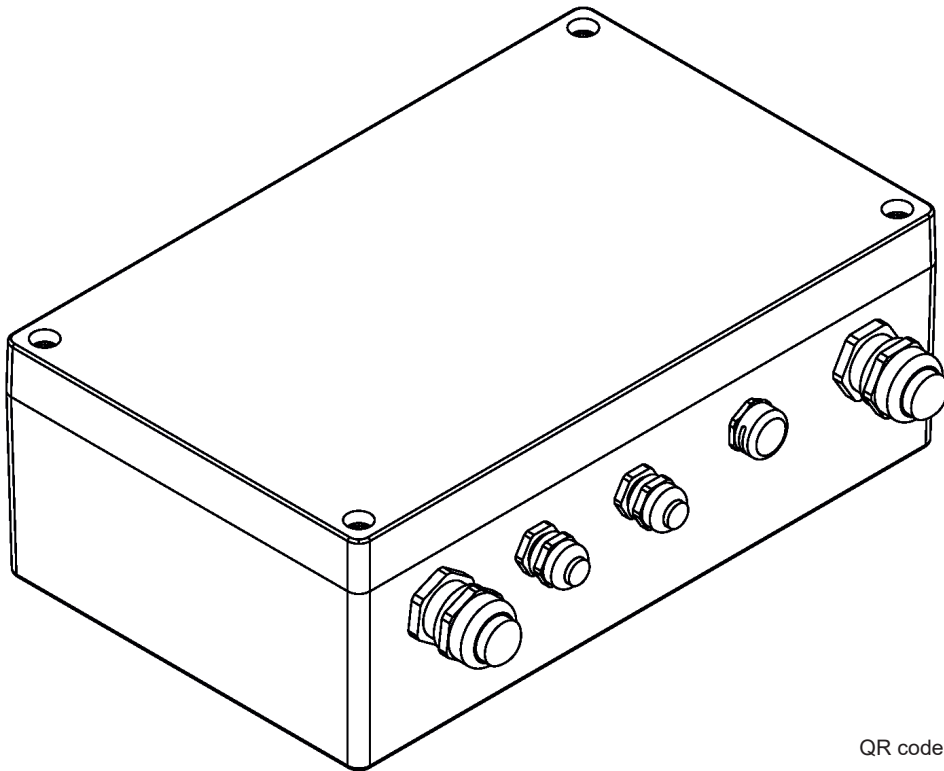


SubDrive 1



QR code for user manual



SubDrive 1

Table of contents

1. Introduction	3
2. Safety information	3
3. Fixture exterior view	4
4. Mounting	5
5. SubDrive 1 menu	8
5.1 Fixture Address ("A001")	8
5.2 Fixture information ("InFo")	8
5.3 Personality ("PErS")	9
5.4 Manual mode ("Man.C.")	9
5.5 Test sequences ("tESt")	10
5.6 Stand-alone setting ("St.AL")	10
5.7 Special functions ("SPEC")	10
6. Technical specifications	14

1. Introduction

The SubDrive 1 serves for power and control of the ArcSource Submersible II LED module.

2. Safety information

FOR YOUR OWN SAFETY, PLEASE READ THIS USER MANUAL CAREFULLY
BEFORE POWERING OR INSTALLING YOUR SubDrive 1 !
Save it for future reference.

DANGEROUS VOLTAGE CONSTITUTING A RISK OF ELECTRIC SHOCK IS PRESENT WITHIN THIS UNIT!

The fixture was designed for outdoor use and it is intended for professional application only. It is not for household use.

Make sure that the available voltage is not higher than stated on the fixture.

Be careful when removing fixture cover in order to get access to the control display and the fixture is under voltage. If you do not need to set the fixture, always disconnect the fixture from AC power before removing its cover.

Do not install the fixture near an open flame.

Refer servicing to qualified service personnel.

This fixture falls under protection class I. Therefore this fixture has to be connected to a mains socket outlet with a protective earthing connection.

Do not connect this fixture to a dimmer pack.

Keep combustible materials at least 10 cm away from the fixture.

Do not cover the fixture with cloth or other materials.

When choosing the installation spot, please make sure that the fixture is not exposed to extreme heat or dust.

Only operate the fixture after having checked that the housing is firmly closed and all screws are tightly fastened.

Operate the fixture only after having familiarized with its functions. Do not permit operation by persons not qualified for operating the fixture.

Please consider that unauthorized modifications on the fixture are forbidden due to safety reasons!
Please use the original packaging if the fixture is to be transported.

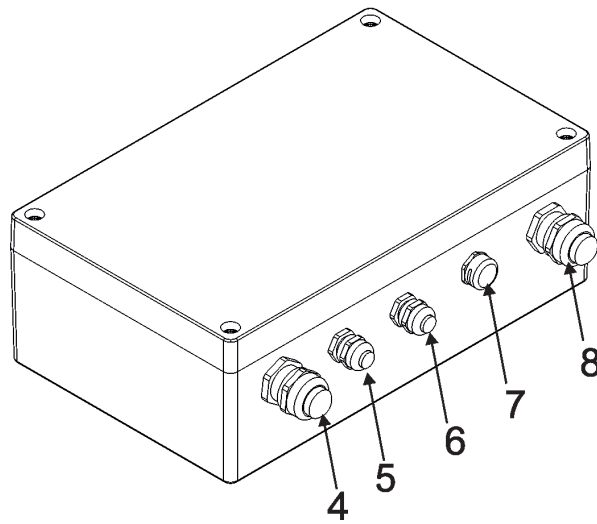
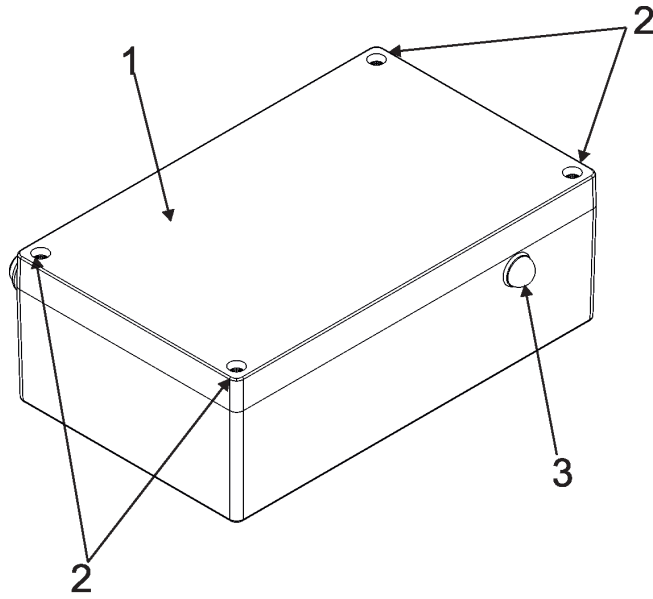
If this device will be operated in any way different to the one described in this manual, the product may suffer damages and the guarantee becomes void. Furthermore, any other operation may lead to dangers like short-circuit, burns, electric shock etc.

Immunity of the equipment is designed for electromagnetic environments E1, E2, E3 according to the standard EN55103-2 ed.2 Electromagnetic compatibility. Product family standard for audio, video, audiovisual and entertainment lighting control apparatus for professional use. Part 2: Immunity. The installation company should check levels of possible interferences above the tested levels E1, E2, E3 given by this standard (e.g. transmitters in surrounding area) before installing the equipment.

The product (covers and cables) must not be exposed to a high frequency electromagnetic field higher than 3V/m.

Emission of the equipment complies with the standard EN55032 Electromagnetic compatibility of multimedia equipment – Emission Requirements according to class B.

3. Fixture exterior view



- 1-Top cover
- 2-Fastening screws
- 3- Antenna cover
- 4-Power In
- 5- DMX In

- 6- DMX Out
- 7- Gore valve
- 8- LED Output

4. Mounting

Fixture must be installed by a qualified electrician in accordance with all national and local electrical and construction codes and regulations.

Maximum cable length between between the SubDrive 1 and the ArcSource Submersible II depends on the operating mode:

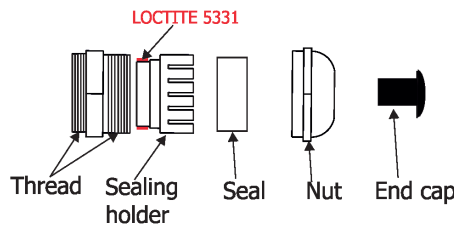
Minimum mode: 100 m

Medium mode: 50 m

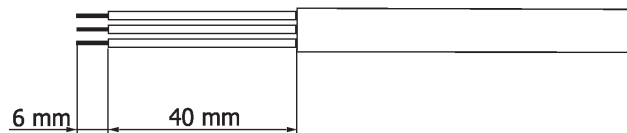
Maximum mode: 25 m

1. Unscrew four fastening screws (2) on the top cover (1) of the SubDrive 1 to get access to the PCB RB 3092 (11) with a display and connection blocks.
2. Fasten the SubDrive 1 on a non-flammable flat surface via four mounting holes (9) of a diameter of 6 mm in the housing.
3. Remove end caps (2) from cable glands before passing cables into the SubDrive 1.
Two cable glands M20x1.5 serve for cable of diameter of 7-13mm and two cable glands M12x1.5 serve for cable of diameter of 3-7mm.
We recommend to apply an adequate layer of the paste LOCTITE 5331 on the plastic holder of each cable gland before inserting it into the body of the gland.

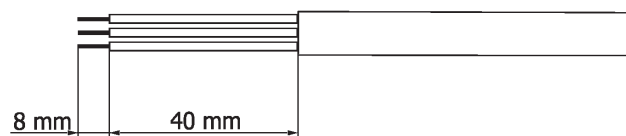
Cable gland M20x1.5 and M12x1.5



DMX cables and ArcSub cables



Power cable



Note: enclosed reducing seal (P/N 13051388) serves for cable of diameter of 4-8mm. Original seal has to be removed from the cable gland before installing the reducing seal.

This device falls under protection class I. Therefore the SubDrive 1 has to be connected to a mains socket outlet with a protective earthing connection.

4. Connect the power cable to the terminal block (10) and rest of cables to the terminal blocks on the PCB (11) according to the tables below, check their connection.
5. Fully tighten cable gland nuts and check that cables are properly fastened in the cable glands.
Note: To keep declared IP rating, every cable gland has to be covered with the end cap if this cable gland is not used for cable passing.

Power connection

	L	N	\oplus
EU	Braun	Blue	Green/yellow
US	Black	White	Green

DMX connection

D +	D -	0V
Data +	Data -	Data ground (shielding)

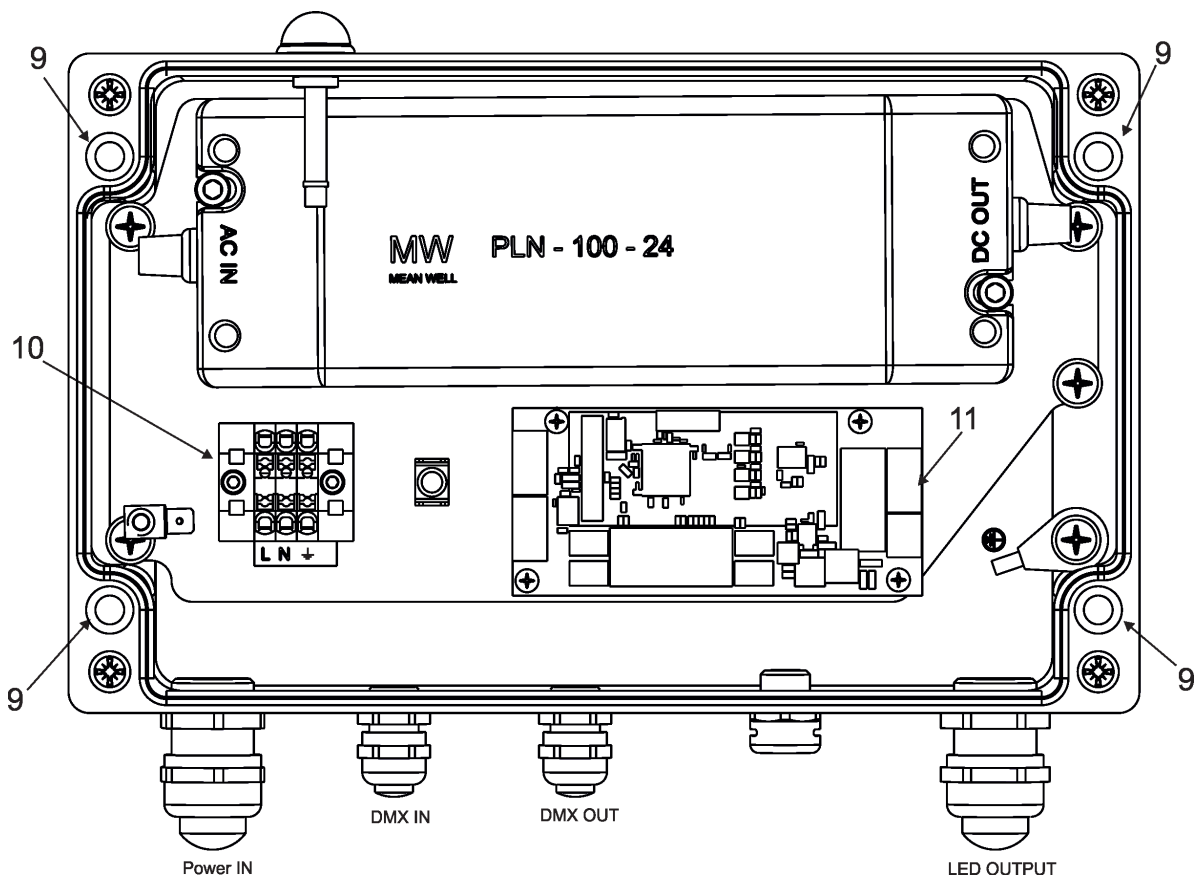
ArcSource Submersible II connection

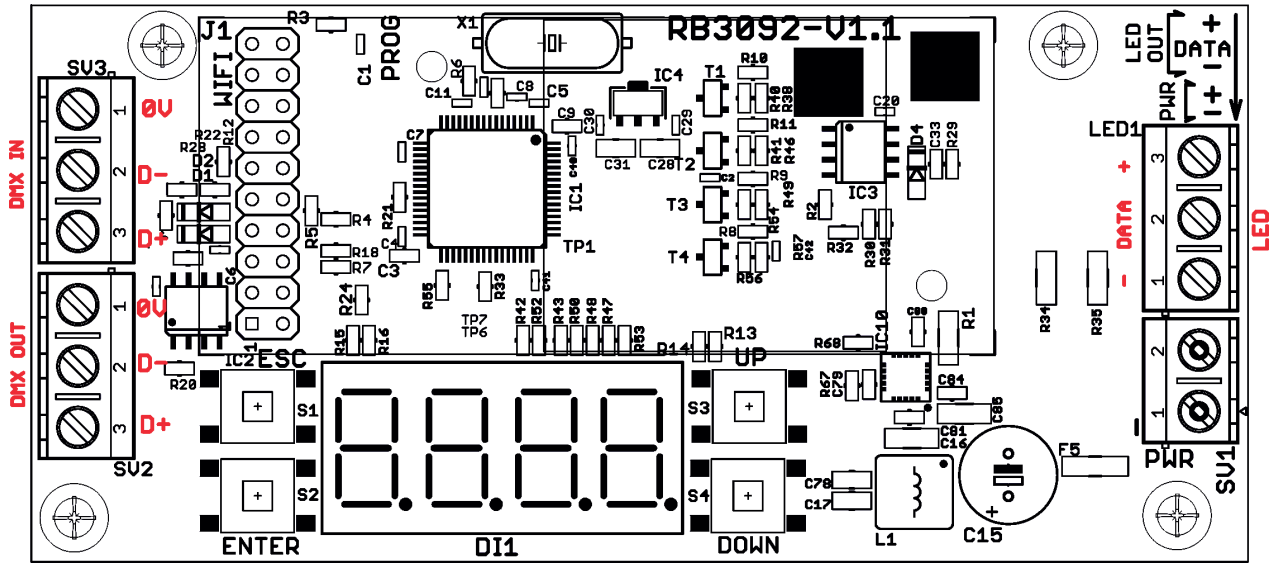
+	DATA	-
+24V (red wire)	Communication (orange wire)	Ground (blue wire)

6. Connect the fixture to mains.

7. Set desired parameters in the fixture menu (DMX address, operating mode, etc) by means of display and four control buttons.

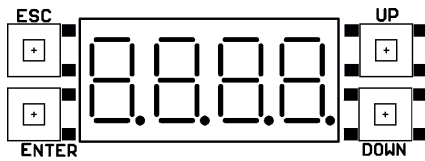
8. Screw the top cover of the fixture back. Check that all screws are firmly tightened.





5. SubDrive 1 menu

The 4-digit display with four buttons serves for setting the fixture to desired operating mode, setting DMX address and mode, manual control etc.



Note: If DMX signal has been disconnected, DMX address blinks.

The four control buttons on the front have the following functions:

ESCAPE button - leaves menu without saving changes.

ENTER button - enters menu, confirms adjusted values and leaves menu.

UP and DOWN buttons - allows you to move between menu items on the same level and set values.

5.1 Fixture Address ("A001")

Use this menu to set the DMX address of the fixture.

"E. dMH" --- Set DMX address. Select this submenu to set a DMX start address.

To set a DMX address.

1. Use the UP/DOWN buttons to find " E.dMX" item.
2. Press the ENTER button.
3. Use the UP/DOWN buttons to select desired start address.
4. Press the ENTER button to confirm the choice.

Note: After switching the fixture on, the SubDrive 1 will automatically detect whether DMX 512 data is received or not.

If there is no data received at the DMX input, the display will start to flash with actually set address.

5.2 Fixture information ("InFo")

Use this menu to read useful information about the fixture status.

To display desired information.

1. Use the UP/DOWN buttons to find the " InFo" menu.
2. Press the ENTER button.
3. Use the UP/DOWN buttons to select the required menu item.
4. Press the ENTER button to confirm the choice.

"P.O.ti" ---Power On time. Use the menu item to read the number of operation hours of the SubDrive 1 and connected ArcSource Submersible II module.

"P.O.t.b." - the function shows the total number of operation hours of the SubDrive 1 since the SubDrive 1 has been fabricated.

"P.t.b.r." - the function shows the number of operation hours of the SubDrive 1 since the counter was last reset.

In order to reset this counter to 0 you have to press and hold the UP and DOWN buttons and at the same time press the ENTER button.

"P.O.t.L." - the function shows the total number of operation hours of the connected ArcSource Submersible II since this ArcSource Submersible II been fabricated.

"P.t.L.r." - the function shows the number of operation hours the connected ArcSource Submersible II since the counter was last reset. In order to reset this counter to 0 you have to press and hold the UP and DOWN buttons and at the at the same time press the ENTER button.

"dM In" ---DMX input values. Select this function to read DMX values of each channel received by the fixture.

"tEMP" ---LED module temperature. Select this menu to read temperature of the connected ArcSource Submersible II module:

"Cur.t." --- the current temperature of the ArcSource Submersible II.

"Hi.tE." --- the maximum temperature of the ArcSource Submersible II since the ArcSource Submersible II has been fabricated.

"rSet" --- the maximum temperature of the ArcSource Submersible II since the counter was last reset. In order to reset this counter to 0 you have to press and hold the UP and DOWN buttons and at the same time press the ENTER button.

The temperature can be displayed in either °C or °F - see option "tEM.U" in the menu "PErS".

"Ver.S." ---Software Versions. Select this function to read the software version of the SubDrive 1 and connected ArcSource Submersible II.

"VEr.1" --- version of the SubDrive 1.

"VEr.2" --- version of the connected ArcSource Submersible II.

5.3 Personality ("PErS")

Use this menu to modify the Control unit operating behaviour.

"dM.Pr." --- DMX mode. Select this menu item to set a desired DMX mode. Please refer to the DMX protocol for detail description of each DMX mode.

"M. F.ti." --- Max. fade time. Select this menu item to set a desired max. fade time (0.1-25.5 sec.). This adjusted fade time influences fade of red, green, blue, white and dimmer during DMX operation:

If time between two receiving DMX values is > than fade time set in the item "M.F.ti.", the entire adjusted fade time will be used.

If time between two receiving DMX values is < than fade time set in the item "M.F.ti.", the adjusted fade time will be reduced to fill entire time between the two receiving DMX values.

e.g "M.F.ti." = 2sec. and fixture has received Red=0 DMX, after 5 seconds will receive red=255 DMX. It means, that red will go to full intensity during 2 seconds.

"M.F.ti." = 8 sec. and fixture has received Red=0 DMX, after 5 seconds will receive red=255 DMX. It means, that red will go to full intensity during 5 seconds. (Max, fade time is reduced from 8 sec. to 5 sec.).

Value "OFF" means, that this function is disabled.

"rGb.C." --- White counting. If this function is On, a white channel uses red, green and blue channels in a proportion to the intensity of the white channel in order to maximize white output of the ArcSource Submersible II. If you wish to light only with white LEDs at white channel, switch this function to OFF.

"tEM.U" --- Temperature Unit. Use this menu in order to display the ArcSource Submersible II temperature in desired units: °C or °F.

"LoAd" --- Load. Use this menu to set a desired power to the connected ArcSource Submersible II.

"Min." - Minimum mode (35W).

"MEd." - Medium mode (70W).

"MAX." - Maximum mode (100W).

"In.Po." --- Init effect positions. Use this function to set effects to desired positions to which they will move after switching the fixture on without receiving DMX.

"dF.SE" --- Default Setting .The menu item sets certain fixture parameters to the default (factory) values:

"M. F.ti." = 0.1

"rGb.C." = On

"tEM.U" = °C

"LoAd" =MEd

5.4 Manual mode ("Man.C.")

Use this menu for control the fixture without connected DMX console.

To control fixture channels.

1. Use the UP/DOWN buttons to find " Man.C" menu.

2. Press the ENTER button.

3. Use the UP/DOWN buttons to select desired effect (channel).

List of control channels (RGBW/RGBA version):

"rEd" - a red LEDs saturation

"GrEn" - a green LEDs saturation

"bLuE" - a blue LEDs saturation

"Vhit" - a white LEDs saturation

"AMbr" - a amber LEDs saturation

"CtO" - a colour temperature correction

“V.C.Vh” - a virtual colour wheel

“Stro” - a strobe, shutter

“dinn” - a dimmer

“din.F” a fine dimmer

4. Press the ENTER button and use the UP/DOWN buttons to set value , press the ENTER button to confirm it.

5.5 Test sequences ("tESt")

Use this menu to run test sequences without an external controller, which will show you some possibilities of using the ArcSource Submersible II.

5.6 Stand-alone setting ("St.AL")

The fixtures on a data link are not connected to the controller but can execute pre-set programs which can be different for every fixture.

"Auto" --- Automatic playback. This function allows you to select the program which will be played after switching the fixture on. Selected program will be played continuously in a loop.

1. Use the UP/DOWN buttons to find “ St.AL” menu.
2. Press the ENTER button.
3. Use the UP/DOWN buttons to select item “Auto” item.
4. Press the ENTER button.
5. Use the UP/DOWN buttons to select desired program.
6. Press the ENTER button to confirm the choice.

"PLAy" --- Playing program. Use the menu to run desired program.

1. Use the UP/DOWN buttons to find “PLAy” menu.
2. Press the ENTER button.
3. Use the UP/DOWN buttons to select desired program.
4. Press the ENTER button. The selected program runs in a loop.

"Edit" --- Editing program. The fixture offers 3 freely editable programs (PrG.1-PrG.3) each up to 40 steps. Every program step includes a fade time-the time taken by the step’s channel status to reach the desired level and a step time-the total time occupied by the step in the program.

E.g. If fade time=5 second and step time =20 second, effects will go to the desired position during 5 seconds and after that they will stay in this position for 15 seconds before going to the next prog. step

1. Use the UP/DOWN buttons to find “ St.AL” menu and press the ENTER button.
2. Use the UP/DOWN buttons to select “Edit” menu and press the ENTER button.
3. Use the UP/DOWN buttons to select a program you want to edit (PrG.1-PrG.3) and press ENTER button.
4. Use the UP/DOWN buttons to select a desired program step ("St.1" - "St. 40") and press ENTER button.
5. Use the UP/DOWN buttons to select a channel you want to edit and press the ENTER button.

List of editable items (RGBW/RGBA version):

“P.End” - a total number of program steps (value 1-40). This value should be set before start programming (e.g. if you want to create program with 10 steps, set P.End=10).

“rEd” - a red LEDs saturation

“GrEn” - a green LEDs saturation

“bLuE” - a blue LEDs saturation

“Vhit” - a white LEDs saturation

"AMbr" - an amber LEDs saturation

“CtO” - a colour temperature correction

“V.C.Vh” - a virtual colour wheel

“Stro” - a strobe, shutter

“dinn” - a dimmer

“din.F” a fine dimmer

“F.tiM.” - a fade time, (0-25.5) seconds

“S.tiM.” - step time, value (0-25.5) seconds

“CoPy.” – this item duplicates the current prog. step to the next prog. step. The item “P.End” is increased automatically if you stay in a last program step.

6. Use the UP/DOWN buttons to set a DMX value of the channel and then press the ENTER button.
7. Use the UP/DOWN buttons to select next channel and press the ENTER button.
8. After having set all channels in the current program step, press the ESCAPE button to go by one menu level back and select another program step.

5.7 Special functions ("SPEC")

"rdML" --- RDM Code. This menu item shows the first part of the RDM identification code.

"rdMH" --- RDM Code. This menu item shows the second part of the RDM identification code.

"L. tyP." --- LED colour variant. This menu allows to set desired colour variant according to connected LED module of the ArSub.

"rGbV" – RGBW variant.

"Si. Co."– Single colour variant.

"SM.Wh.– Smart white variant.

"rGbA" - RGBA variant.

Note: The some menu items will be changed according to set colour variant!

"Adj" --- Adjustment. The menu allows adjustment of white colours.

"MAn.C."- Use the menu to set DMX values of fixture's channels.

"CaL. C." - A calibration of white colours by means of an automatic calibration with a factory equipment.

"rEd" - a red LEDs calibration (0-255)

"GrEn" - a green LEDs calibration (0-255)

"bLuE" - a blue LEDs calibration (0-255)

"Vhit" - a white LEDs calibration (0-255)

"CAL.t." – Selection of colour temperatures for manual calibration: 2700K, 3200K, 4200K, 5600K, 8000K.

Manual colour calibration:

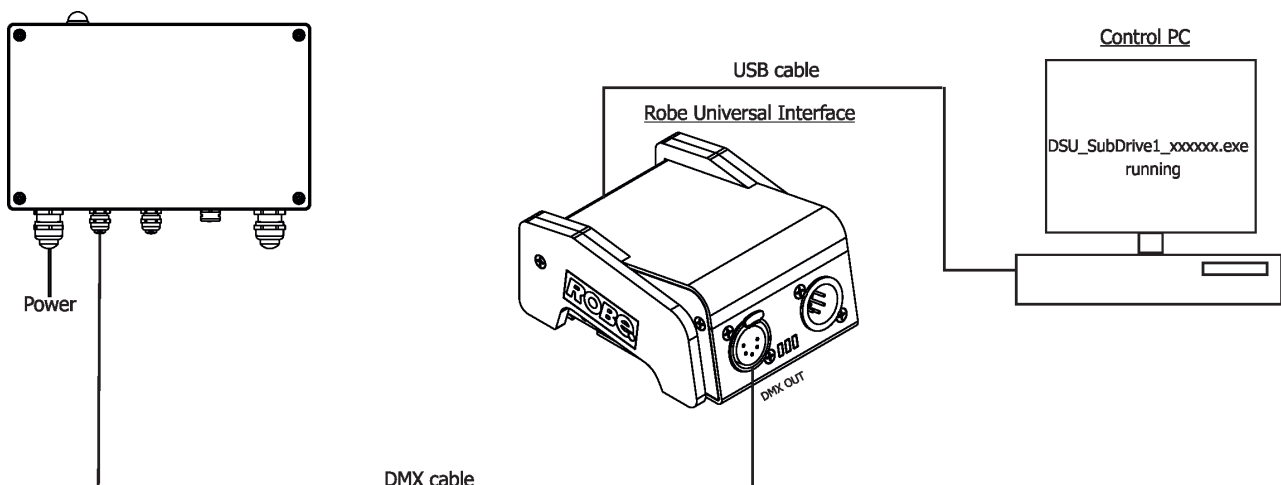
1. Connect the fixture to the mains , go to the "MAn.C." menu and set the shutter,dimmer, red, green, blue and white channel at 255DMX and let the LED module heat up (cca 1 hour).
2. Go to the "CAL.t." menu, select "2700K" item and by means of the "rEd", "GrEn", "bLuE", "Vhit" items adjust the 2700K colour temperature as exactly as possible ($\Delta u'v' = 0$).
After calibration, select and confirm item "SAVE" to save adjusted values.
3. Go to the "CAL.t." menu, select "3200K" item and by means of the "rEd", "GrEn", "bLuE", "Vhit" items adjust the 3200K colour temperature as exactly as possible ($\Delta u'v' = 0$).
After calibration, select and confirm item "SAVE" to save adjusted values..
4. Repeat this procedure for rest of colour temperatures (4200K, 5600K, 8000K).

uPd.b. --- Software update. The menu item allows you to update software in the SubDrive 1 an connected ArcSource Submersible II via either serial or USB port of PC.

The following items are required in order to update software:

- PC running Windows or Linux or macOS
- DSU file
- Flash cable RS232/DMX, P/N13050624 (if you want to use a serial port of PC)
- Robe Universal Interface or Robe Universal interface WTX (if you want to use an USB port of PC)

After the software update the fixture will be set to default values.



To update software in the fixture:

1. DSU file is available from Robe web site at WWW.robe.cz.

File with extension zip is intended for Windows (used and tested from XP to W10 on 32/64bit systems).

File with extension tbz is intended for Linux (used and tested on Debian and Ubuntu 32/64bit).

File with extension dmg is intended for macOS (used and tested on OSX up to Sierra) XQuartz required, install it from <https://www.xquartz.org/>

Save the download file to a folder on your computer.

In case that you use windows, extract files in the zip file (e.g. DSU_SubDrive_1.zip)

2. Disconnect the fixture from DMX controller.

3. If you use the flash cable RS232/DMX, connect a serial port of your computer with DMX input of the fixture by means of the cable.

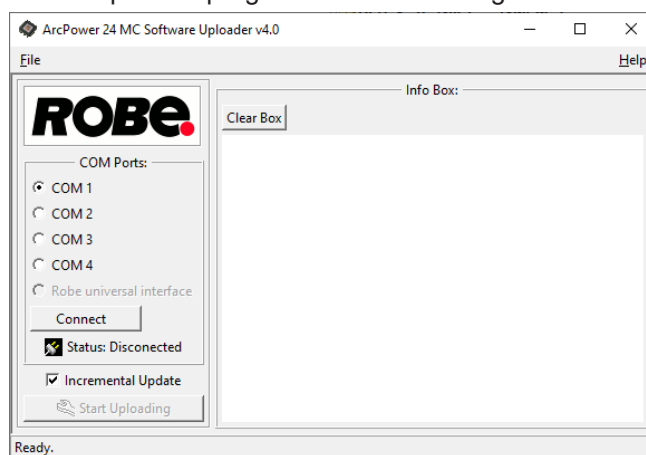
If you use the Robe Universal Interface, connect a USB port of your computer with the Robe Universal Interface by means of the USB cable and DMX input of the fixture with the DMX output of the Robe Universal Interface via a DMX cable.

4. Switch the fixture to the update mode (tab "SPEC" --> "uPd.b."--> "yES.").

Note: If you do not want to continue in the software update, you have to switch off and on the fixture to escape from the updating mode.

We recommend to cancel all running programs on your computer before starting the software update.

5. Double-click the software uploader file (e.g. DSU_SubDrive_1.exe) in the extracted files. The Software Uploader program will start running.



6. Select correct "COM " number if you use a Flash cable RS232/DMX or select "Robe Universal Interface " if you use the Robe Universal Interface/Robe Universal Interface WTX and then click on the "Connect" button.

7. If the connection is OK, click the "Start Uploading" button to start software uploading. It will take several minutes to perform software update.

If the option "Incremental Update" is not checked, all processors will be updated (including processors with the same software version).

If you wish to update only processors with new version of software, check the "Incremental Update box".

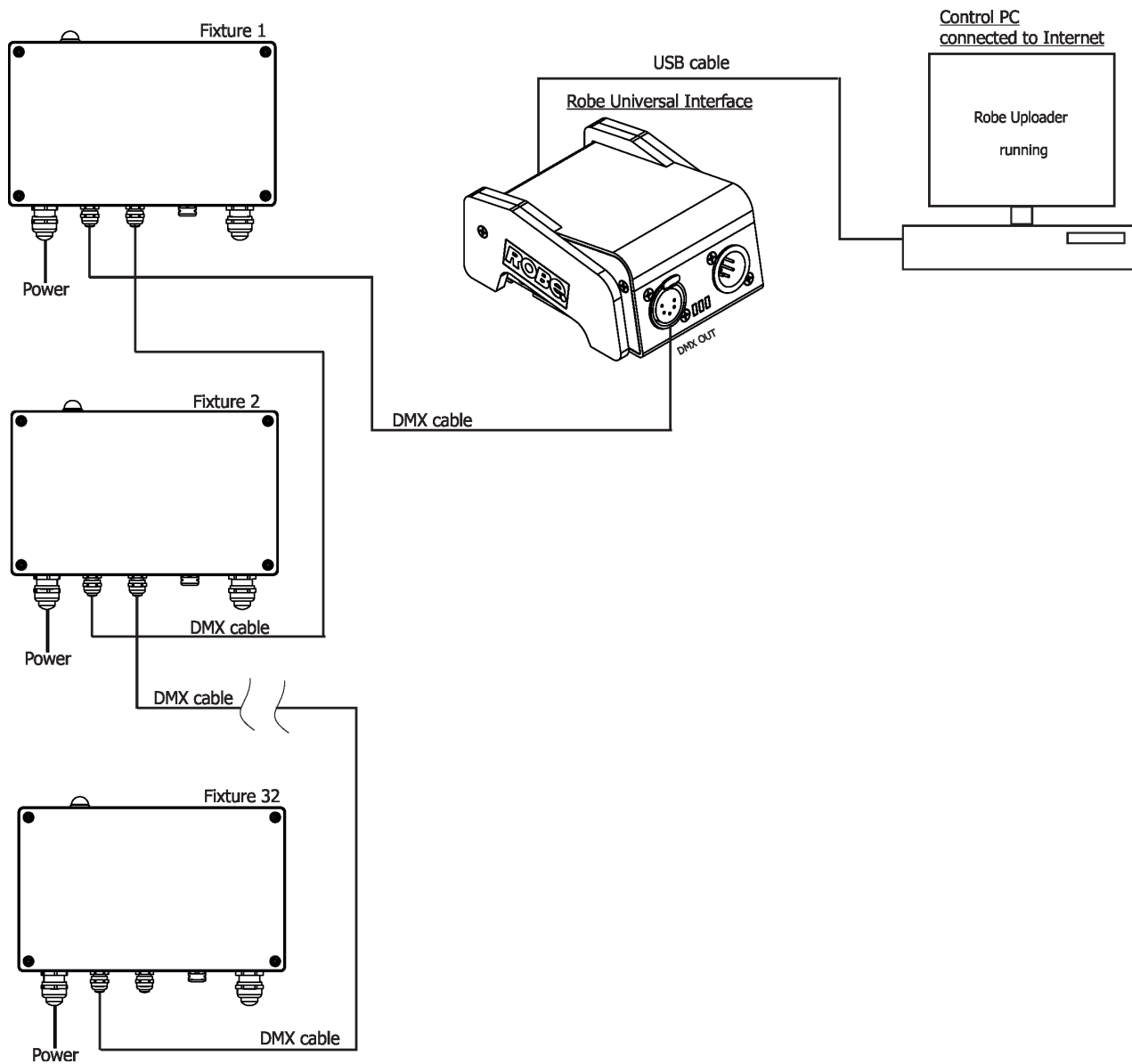
Avoid interrupting the process. Update status is displayed in the "Info Box" window.

When the update is finished, the line with the text "Fixture is successfully updated" will appear in this window.

In case upload process is interrupted (e.g. power loss), the fixture stays in "Updating mode" and you will have to repeat the software update again.

Another way, how to update software in the fixtures (especially large installation of fixtures) is to use the ROBE Uploader. It is a software for automatized software update of Robe fixtures. It takes advantage of RDM support).

For more information please see <https://www.robe.cz/robe-uploader/>.



6. Technical specifications

ELECTRICAL

Input Voltage: 100 - 277 V AC 50 / 60 Hz

Max. Power Consumption: 110W

Max. Output Power

Maximum mode: 100W

Medium mode: 70W

Minimum mode: 35W

Max. Output Current

Maximum mode: 1000 mA

Medium mode: 700 mA

Minimum mode: 350 mA

LED Output Voltage: 24V DC

CONTROL

Display: 4 - Digit LED, 4 buttons

Wireless DMX (Option): Lumen Radio CRMX Technology

Interface Protocol: USITT DMX512, RDM

Control System: Third Party DMX Controllers

Operating Modes: DMX, Master/Slave, Stand-alone

DMX Modes:

RGBW/RGBA: 4 (2,3,4,9 channels)

SW: 3 (2,2,6 channels)

SC: 2 (1,3 channels)

Editable Programs: 3 (up to 40 steps each)

Settings/Addressing: Via RDM communicator or Robe Universal Interface (RUNIT)

PHYSICAL

Weight 3 kg / 6.61 lbs

Number of LED Output zones: 1

Max. Load Per Zone: 1x ArcSource Submersible II

Total Load: 1x ArcSource Submersible II

Max Cable Length:

100m (Minimum mode)

50m (Medium mode)

25m (Maximum mode)

LED Output Connection: Terminal Block

DMX Connection: Terminal Block

Power Connection: Terminal Block

Finish Options: Standard Colour - Graphite Black (RAL 9011), Silver (RAL 9006)

Cost Option: Custom RAL

Mounting Method: 4 Mounting Holes

Protection Factor: IP67 (CE)

Suitable For Wet Location (US)

IK Rating: IK10

Cooling System: Convection

Operating Temperature Range: -20 °C / +40 °C (-4 °F / +104 °F)

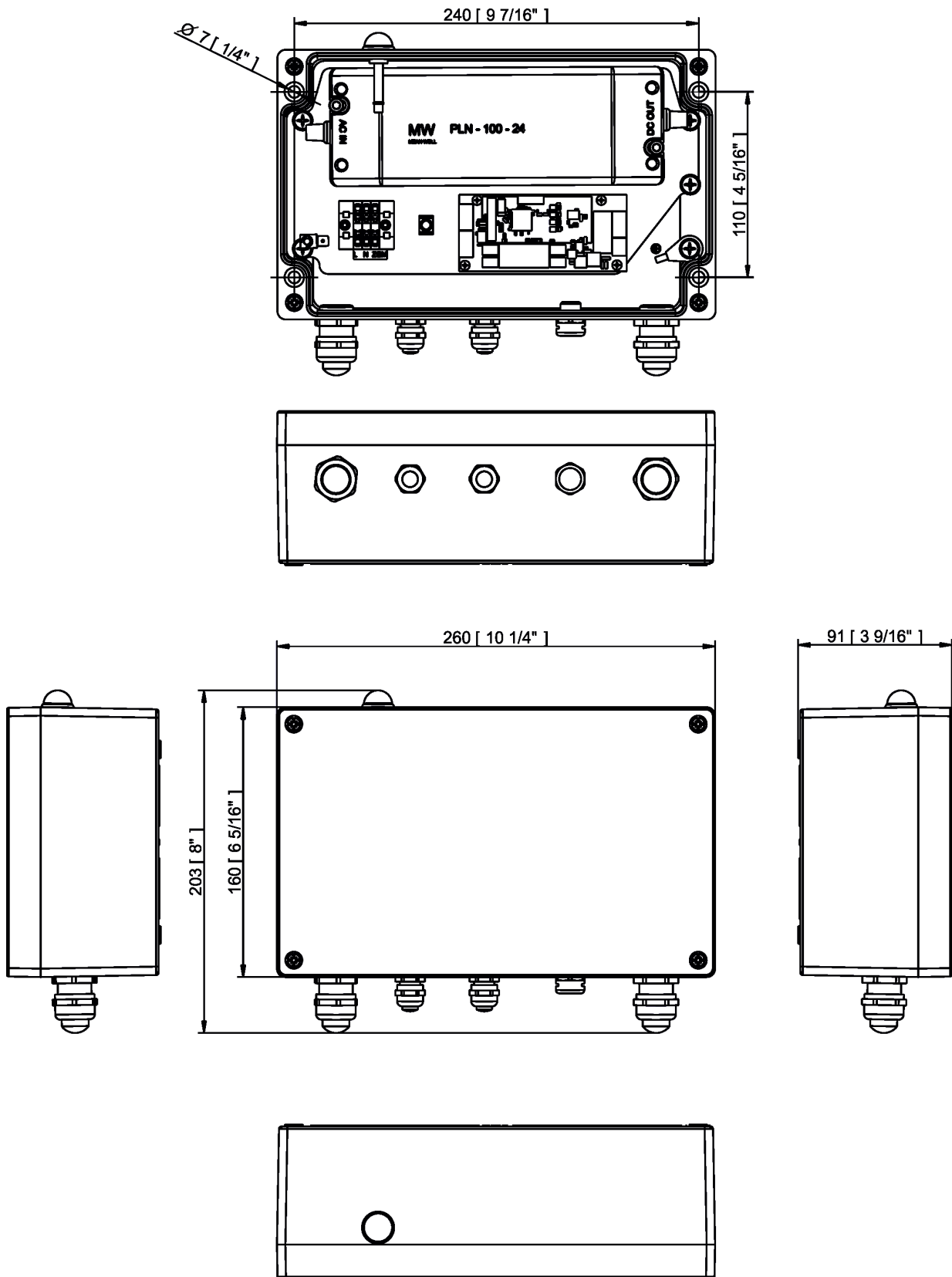
INCLUDED ITEMS

1 x SubDrive 1

1 x Reducing seal (P/N 13051388) for cable diameter of 4-8 mm.

1 x User manual

DIMENSIONS
mm [inch]



May 25, 2022

Copyright © 2021-2022 Robe Lighting - All rights reserved

All Specifications subject to change without notice

Made in CZECH REPUBLIC by ROBE LIGHTING s.r.o. Palackeho 416/20 CZ 75701 Valasske Mezirici

SubDrive 1 (RGBW, RGBA) - DMX chart, version 1.0						
Mode/Channel				Value	Function	Type of control
1	2	3	4			
*	1	1	1	0-255	Red Red LEDs saturation control (0-100%) (255=default)	proportional
*	2	2	2	0-255	Green Green LEDs saturation control (0-100%) (255=default)	proportional
*	3	3	3	0-255	Blue Blue LEDs saturation control (0-100%) (255=default)	proportional
*	*	4	4	0-255	White (Amber) LEDs saturation control (0-100%) (255=default)	proportional
*	*	*	*	1-127	Green correction -all zones Minus green - uncorrected white	proportional
				128	Uncorrected white (128=default)	step
				129-255	Uncorrected white - Plus green	proportional
*	*	*	5	0	CTO - all zones No function (0=default)	step
				1-255	Colour temperature correction	proportional
1	*	*	6		Virtual Colour Wheel - all zones No function (0=default)	step
				1-2	White 2700 K	step
				3	White 2700 K (tungsten emulation*)	step
				4-5	White 3200 K	step
				6	White 3200 K (tungsten emulation*)	step
				7-9	White 4200 K	step
				10-12	White 5600 K	step
				13-15	White 8000 K	step
				16	Blue (Blue=full, Red+Green+White=0)	step
				17-55	Red=0, Green->up,Blue =full, White=0	proportional
				56	Light Blue (Red=0, Green=full, Blue =full, White=0)	step
				57 - 95	Red=0, Green=full, Blue->down, White/Amber=0	proportional
				96	Green (Red=0, Green=full, Blue =0, White=0)	step
				97 – 134	Red->up, Green=full, Blue=0, White=0	proportional
				135	Yellow (Red=full, Green=full, Blue=0, White=0)	step
				136 - 174	Red=full, Green->down, Blue=0, White=0	proportional
				175	Red(Red=full, Green=0, Blue=0, White=0)	step
176 - 214	Red=full, Green=0, Blue->up, White=0	proportional				
215	Magenta (Red=full, Green=0, Blue=full, White=0)	step				
216 - 246	Red -> down, Green=0, Blue=full, White=0	proportional				
247	Blue (Red=0, Green=0, Blue=full, White=0)	step				
248-251	Rainbow effect(with fade time) from min.->max. speed	proportional				
252-255	Rainbow effect(without fade time)from min.->max.speed	proportional				
					Shutter/Strobe - all zones	
				0-31	Shutter closed	step
				32-63	Shutter open (32=default)	step
				64-95	Strobe effect from slow--> fast	proportional
				96-127	Shutter open	step

Mode/Channel				Value	Function	Type of control
1	2	3	4			
*	*	*	7	128-143	Opening pulses in sequences from slow--> fast	proportional
				144-159	Closing pulses in sequences from fast--> slow	proportional
				160-191	Shutter open	step
				192-223	Random strobe effect from slow --> fast	proportional
				224-255	Shutter open	step
2	*	*	8		Dimmer coarse - all zones	
				0-255	Dimmer intensity from 0% to 100% (0=default)	proportional
*	*	*	9		Dimmer fine -all zones	
				0-255	Dimmer intensity from min. —>max. (0=default)	proportional
*Halogen lamp effect during dimming						
Copyright © 2021 Robe Lighting s.r.o. - All rights reserved						
All Specifications subject to change without notice						

SubDrive 1 (SW) - DMX chart, version 1.0					
Mode/Channel			Value	Function	Type of control
1	2	3			
1	*	1	0-255	Warm white- Warm white LEDs saturation control (0-100%) (255=default)	proportional
2	*	2	0-255	Cool white Cool white LEDs saturation control (0-100%) (255=default)	proportional
*	1	3		Virtual Colour Wheel - all zones	
			0	No function (0=default)	step
			1-2	White 2800K	step
			3-4	White 3200K	step
			5-6	White 3800K	step
			7-8	White 4200K	step
			9-10	White 4600K	step
			11-12	White 5000K	step
			13-14	White 5600K	step
			15-16	White 6300K	step
			17-247	Warm white --> Cool white	proportional
248-255	Reserved				
*	*	4		Shutter/Strobe - all zones	
			0-31	Shutter closed	step
			32-63	Shutter open (32=default)	step
			64-95	Strobe effect from slow--> fast	proportional
			96-127	Shutter open	step
			128-143	Opening pulses in sequences from slow--> fast	proportional
			144-159	Closing pulses in sequences from fast--> slow	proportional
			160-191	Shutter open	step
			192-223	Random strobe effect from slow --> fast	proportional
224-255	Shutter open	step			
*	2	5		Dimmer coarse - all zones	
			0-255	Dimmer intensity from 0% to 100% (0=default)	proportional
*	*	6		Dimmer fine - all zones	
			0-255	Dimmer intensity from min.—>max. (0=default)	proportional
Copyright © 2021 Robe Lighting s.r.o. - All rights reserved					
All Specifications subject to change without notice					

SubDrive 1 (SC) - DMX chart, version 1.0				
Mode/ Channel		Value	Function	Type of control
1	2			
*	1		Shutter/Strobe - all zones	
		0-31	Shutter closed	step
		32-63	Shutter open (32=default)	step
		64-95	Strobe effect from slow--> fast	proportional
		96-127	Shutter open	step
		128-143	Opening pulses in sequences from slow--> fast	proportional
		144-159	Closing pulses in sequences from fast--> slow	proportional
		160-191	Shutter open	step
		192-223	Random strobe effect from slow --> fast	proportional
224-255	Shutter open	step		
1	2		Dimmer coarse - all zones	
		0-255	Dimmer intensity from 0% to 100% (0=default)	proportional
*	3		Dimmer fine - all zones	
		0-255	Dimmer intensity from min.—>max. (0=default)	proportional
Copyright © 2021 Robe Lighting s.r.o. - All rights reserved				
All Specifications subject to change without notice				